

主要寸法全体図

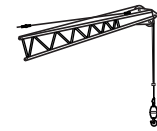
タワークレーン

主要仕様

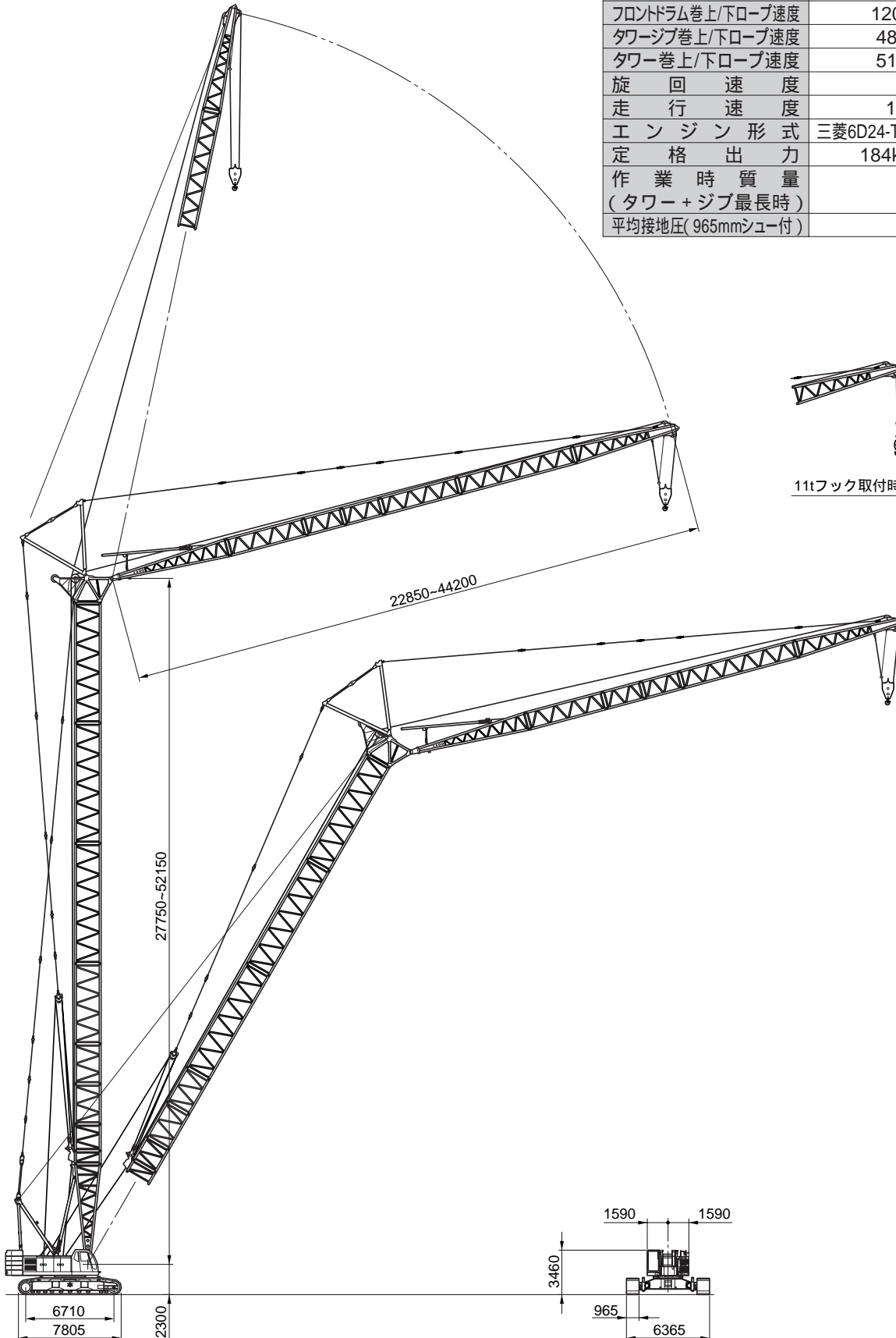
SCX1200全油圧式クローラクレーン(タワークレーン仕様)

最大吊上げ能力	20.0 t × 14.0m
タワー高さ	27.75m ~ 52.15m
タワージブ長さ	22.85m ~ 44.20m
タワー + タワージブ	52.15m + 44.20m
フロントドラム巻上/下ロープ速度	120 ~ 2.0m/min
タワージブ巻上/下ロープ速度	48 ~ 2.0m/min
タワー巻上/下ロープ速度	51 ~ 2.0m/min
旋回速度	2.1min ⁻¹
走行速度	1.5/1.1km/h
エンジン形式	三菱6D24-TE1型ディーゼルエンジン
定格出力	184kW/2000min ⁻¹
作業時質量 (タワー + ジブ最長時)	約 129 t
平均接地圧(965mmシュー付)	92 kPa

(単位: mm)

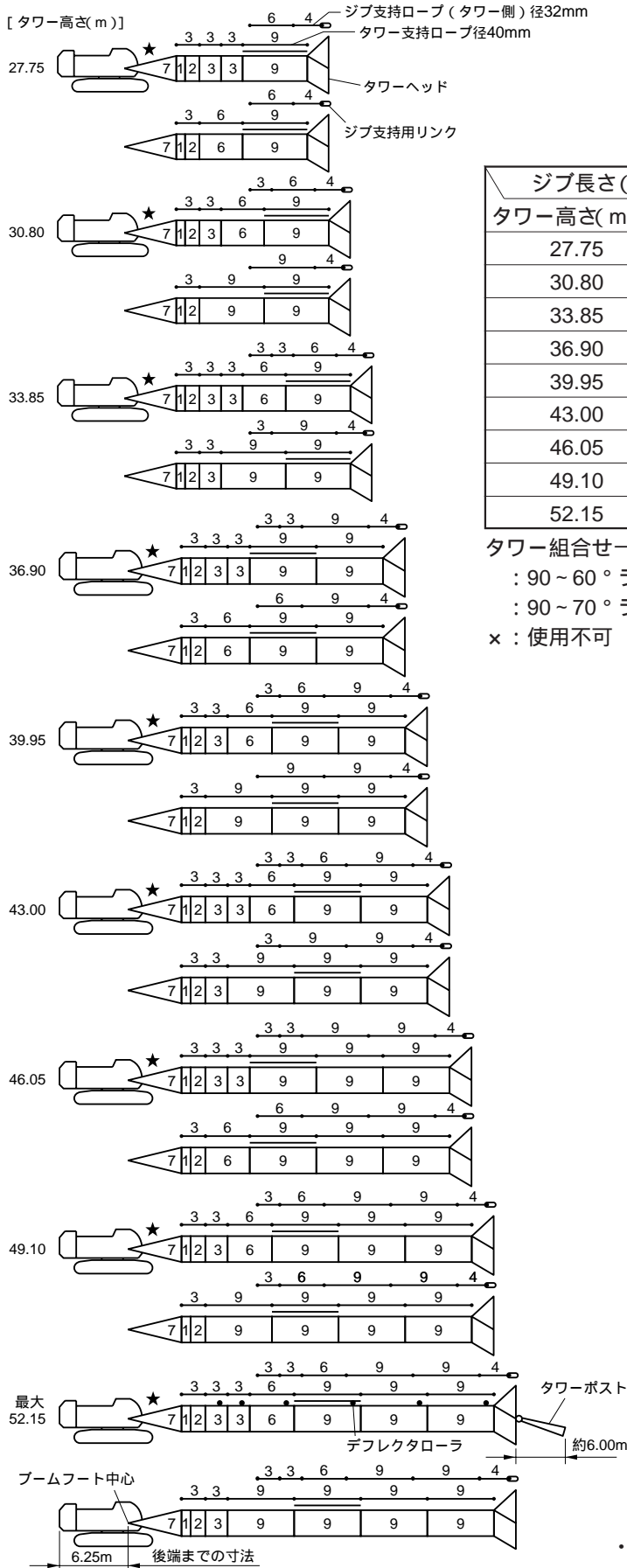


11tフック取付時



タワー・ジブおよび支持ロープの構成

1 タワーおよび支持ロープの構成



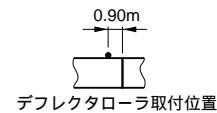
ジブ長さ (m)	22.85	25.90	28.95	32.00	35.05	38.10	41.15	44.20
タワー高さ (m)								
27.75		×	×	×	×	×	×	×
30.80			×	×	×	×	×	×
33.85				×	×	×	×	×
36.90					×	×	×	×
39.95						×	×	×
43.00							×	×
46.05								×
49.10								
52.15								

タワー組合せ一覧中の各記号は下記の通りです。

- ： 90～60°ラフィング可能
- ： 90～70°ラフィング可能
- ×： 使用不可

図示省略寸法

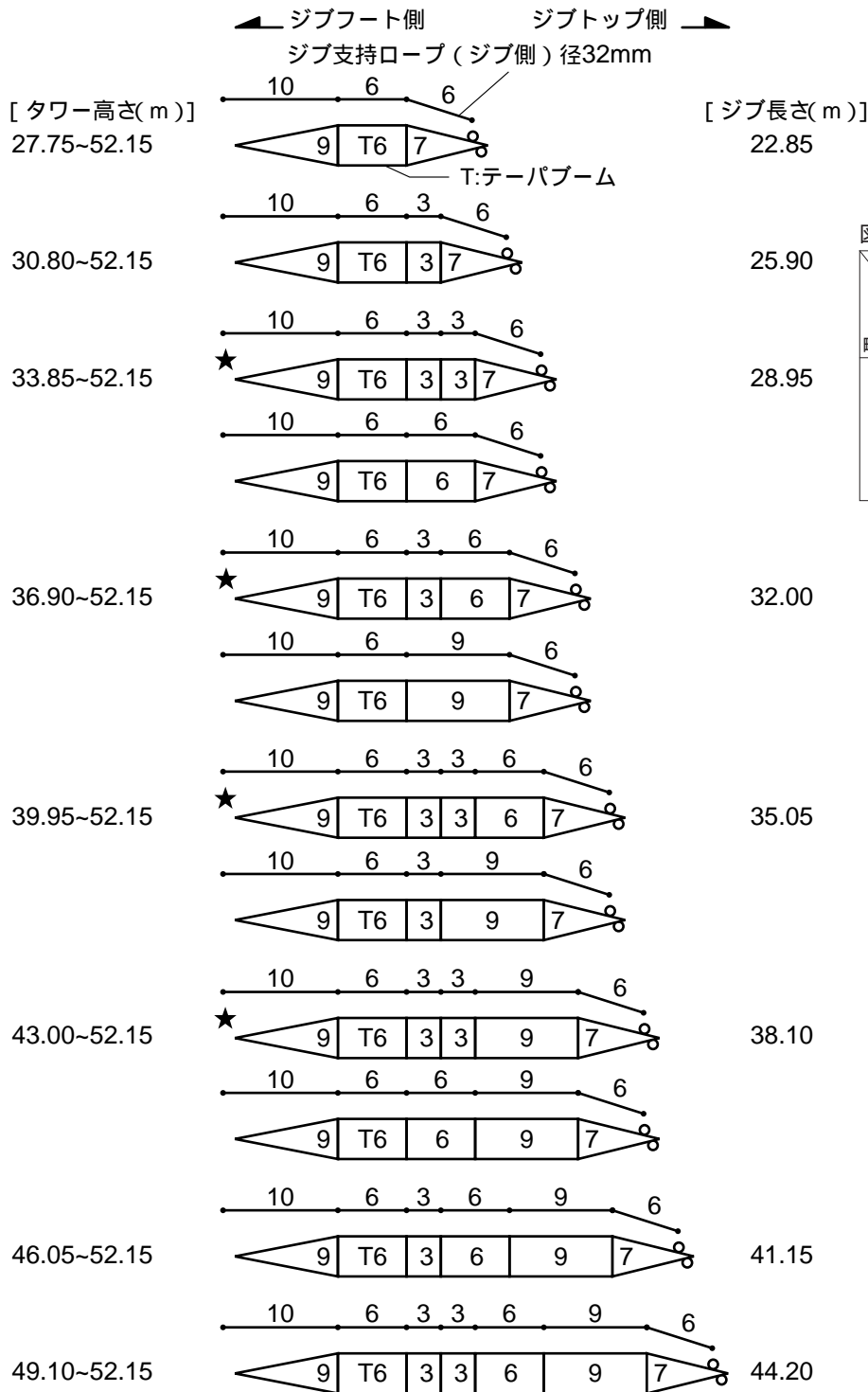
使用箇所 略記号	タワー高さ	タワー支持ロープ ロープ径 40mm	ジブ支持ロープ (タワー側) ロープ径 32mm
1	0.90 m		
2	2.15 m		
3	3.05 m	3.05 m	3.05 m
4			4.00 m
6	6.10 m	6.10 m	6.10 m
7	7.60 m		
9	9.15 m	9.15 m	9.15 m



- ・ 9 印は、網付きブームを示します。
- ・ 印の付いた構成は、そのアタッチメント長さで購入する場合の推奨ブーム構成を示します。

タワー・ジブおよび支持ロープの構成

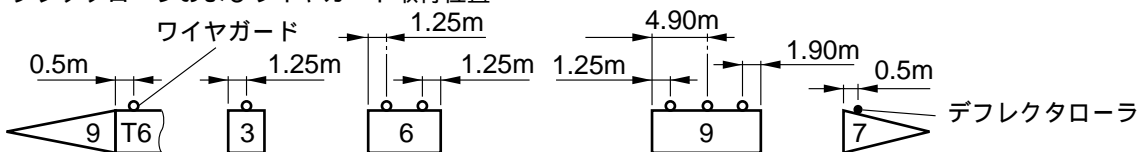
2 ジブおよび支持ロープの構成



図示省略寸法

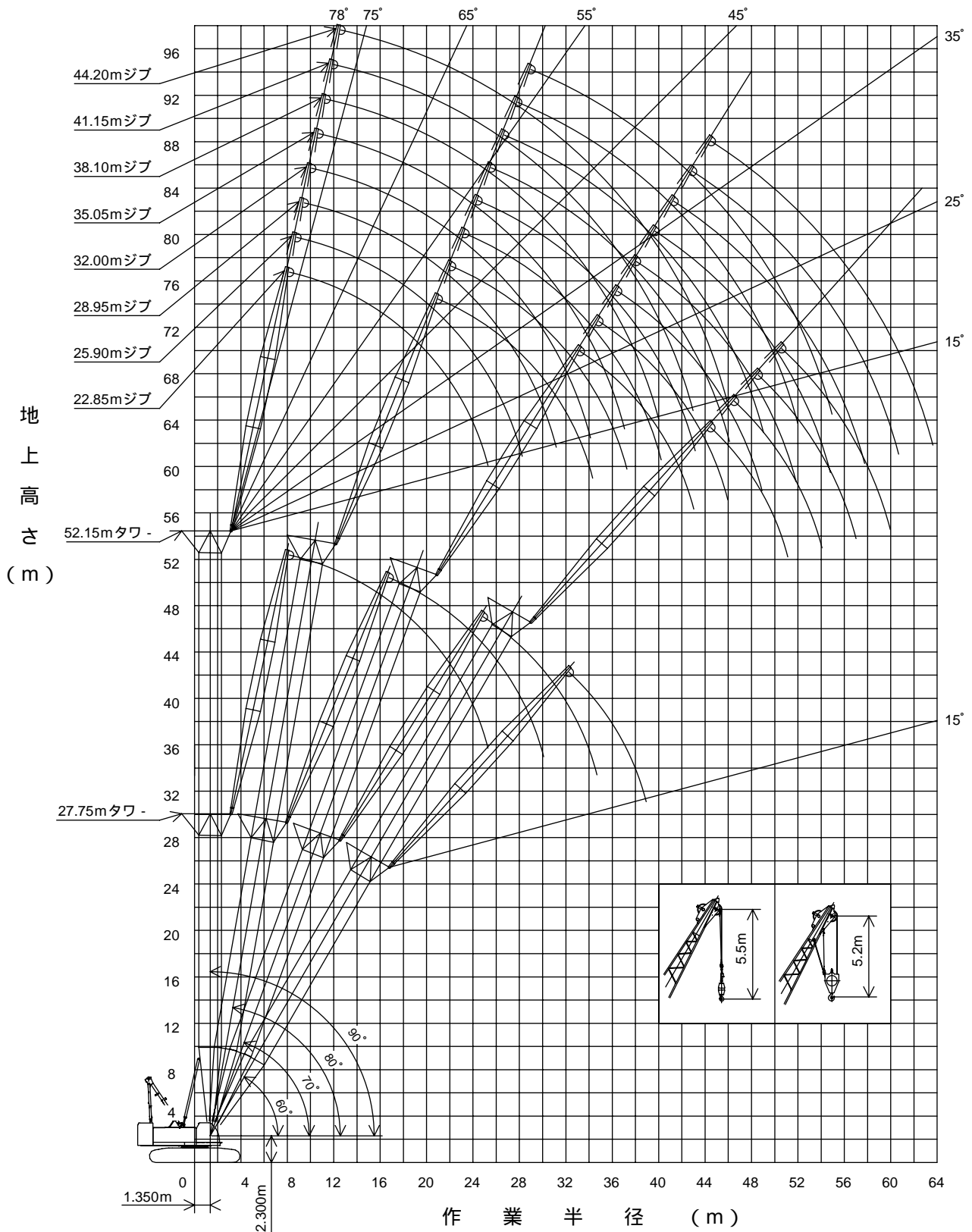
使用箇所 略記号	ジブ長さ	ジブ支持ロープ (ジブ側) ロープ径 32mm
3	3.05 m	3.05 m
6	6.10 m	6.10 m
7	7.60 m	6.10 m
9	9.15 m	9.15 m
10	10.65 m	10.65 m

デフレクタローラおよびワイヤガード取付位置



- 印の付いた構成は、そのアタッチメント長さで購入する場合の推奨ブーム構成を示します。

作業範囲図



定格総荷重表

27.75mタワー

(単位:t)

作業半径 (m)	タワージブ長さ (m)							
	22.85							
	タワー角度 (°)							
	90		80		70		60	
2本掛	1本掛	2本掛	1本掛	2本掛	1本掛	2本掛	1本掛	
8.0	20.0/8.1	11.0/8.5						
9.0	20.0	11.0						
10.0	20.0	11.0						
12.0	20.0	11.0						
14.0	20.0	11.0						
15.0	18.6	11.0						
16.0	17.5	11.0	16.9/16.6	11.0/17.1				
18.0	15.5	11.0	15.5	11.0				
20.0	14.0	11.0	14.0	11.0				
22.0	12.5	11.0	12.5	11.0				
24.0	10.7	10.7	10.7	10.7	10.5/24.6	10.4/25.2		
26.0	9.2/24.6	9.1/25.6	10.3	10.3	10.3	10.3		
28.0			10.1	10.1	10.1	10.1		
30.0			9.6/29.4	9.6	9.3	9.3	9.1/31.9	
32.0				9.5/30.3	9.1	9.1	9.1	8.9/32.6
34.0					8.8/33.9	8.8	8.5	8.5
36.0						8.7/34.9	7.9	7.9
38.0							7.4	7.4
40.0							7.3/38.2	7.2/39.2

30.80mタワー

(単位:t)

作業半径 (m)	タワージブ長さ (m)															
	22.85								25.90							
	タワー角度 (°)															
	90		80		70		60		90		80		70		60	
2本掛	1本掛	2本掛	1本掛	2本掛	1本掛	2本掛	1本掛	2本掛	1本掛	2本掛	1本掛	2本掛	1本掛	2本掛	1本掛	
8.0	20.0/8.1	11.0/8.5								18.6/8.7						
9.0	20.0	11.0								18.6	11.0/9.2					
10.0	20.0	11.0								18.6	11.0					
12.0	20.0	11.0								18.6	11.0					
14.0	20.0	11.0								18.6	11.0					
15.0	18.6	11.0								18.6	11.0					
16.0	17.5	11.0	16.4/17.1	11.0/17.7						17.5	11.0					
18.0	15.5	11.0	15.5	11.0						15.5	11.0	15.3/18.2	11.0/18.8			
20.0	14.0	11.0	14.0	11.0						14.0	11.0	14.0	11.0			
22.0	12.5	11.0	12.5	11.0						12.5	11.0	12.5	11.0			
24.0	10.9	10.9	10.9	10.9	10.2/25.6					11.2	11.0	11.2	11.0			
26.0	9.3/24.6	9.2/25.6	10.1	10.1	10.1	10.0/26.3				10.2	10.2	10.2	10.2	9.7/27.2	9.5/27.9	
28.0			9.6	9.6	9.6	9.6				8.2/27.5	8.2	9.5	9.5	9.5	9.5	
30.0			9.3/29.9	9.3	9.2	9.2					8.1/28.5	9.1	9.1	9.1	9.1	
32.0				9.2/30.9	9.0	9.0	8.4/33.4					8.4	8.4	8.4	8.4	
34.0					8.7	8.7	8.2	8.1/34.2				8.2/32.8	8.1/33.8	7.9	7.9	
36.0					8.3/35.0	8.2	7.6	7.6						7.5	7.5	
38.0							7.1	7.1						7.2/37.9	7.2	
40.0							6.7/39.7	6.7						7.1/38.9	6.5	
42.0								6.6/40.7							6.1	
44.0															6.0/42.7	
															5.9/43.7	

注 1. 定格総荷重は、水平堅土上における値で転倒荷重の78%以内および移動式クレーン構造規格で定める前方安定度が、1.15以上の両方を満足する値です。
 2. ハッチングで示された定格総荷重は、構造物等の強度により制限される値です。
 3. 実際に吊り上げ得る荷重は、定格総荷重からフック、玉掛けロープ等の吊り具一切の質量を差し引いた値です。
 4. 作業を行う場合は、必ずハイガントリにしてください。

定格総荷重表

33.85mタワー

(単位:t)

作業半径 (m)	タワージブ長さ (m)															
	22.85							25.90								
	タワー角度 (°)															
	90		80		70		60		90		80		70		60	
2本掛	1本掛	2本掛	1本掛	2本掛	1本掛	2本掛	1本掛	2本掛	1本掛	2本掛	1本掛	2本掛	1本掛	2本掛	1本掛	
8.0	20.0/8.1	11.0/8.5								18.6/8.7						
9.0	20.0	11.0								18.6	11.0/9.2					
10.0	20.0	11.0								18.6	11.0					
12.0	20.0	11.0								18.6	11.0					
14.0	20.0	11.0								18.6	11.0					
15.0	18.6	11.0								18.6	11.0					
16.0	17.5	11.0	15.9/17.6							17.5	11.0					
18.0	15.5	11.0	15.5	11.0/18.2						15.5	11.0	14.9/18.8	11.0/19.3			
20.0	14.0	11.0	14.0	11.0						14.0	11.0	14.0	11.0			
22.0	12.5	11.0	12.5	11.0						12.5	11.0	12.5	11.0			
24.0	11.0	11.0	11.0	11.0						11.2	11.0	11.2	11.0			
26.0	9.5/24.6	9.4/25.6	10.5	10.5	10.3/26.6	10.1/27.3				10.2	10.2	10.2	10.2			
28.0			9.9	9.9	9.9	9.9				8.4/27.5	8.4	9.4	9.4	9.3/28.3	9.1/28.9	
30.0			9.1	9.1	9.1	9.1				8.3/28.5	8.8	8.8	8.8	8.8	8.8	
32.0			9.0/30.4	8.9/31.4	8.5	8.5					8.3	8.3	8.3	8.3		
34.0					8.1	8.1	7.6/34.9	7.3/35.7			8.1/33.4	8.1	8.0	8.0		
36.0					7.8	7.8	7.3	7.3				8.0/34.4	7.8	7.8	6.9/36.9	6.7/37.7
38.0						7.7/37.0	6.8	6.8					7.2	7.2	6.7	6.7
40.0							6.4	6.4					7.0/39.0	6.9	6.2	6.2
42.0							6.1/41.2	6.1							5.8	5.8
44.0								6.0/42.2							5.5	5.5
46.0															5.4/44.2	5.4/45.2

作業半径 (m)	タワージブ長さ (m)							
	28.95							
	タワー角度 (°)							
	90		80		70		60	
2本掛	1本掛	2本掛	1本掛	2本掛	1本掛	2本掛	1本掛	
9.0	15.4/9.4	11.0/9.8						
10.0	15.4	11.0						
12.0	15.4	11.0						
14.0	15.4	11.0						
15.0	15.4	11.0						
16.0	15.4	11.0						
18.0	15.4	11.0	14.0/19.9					
20.0	14.0	11.0	14.0	11.0/20.5				
22.0	12.4	11.0	12.4	11.0				
24.0	11.2	11.0	11.2	11.0				
26.0	10.1	10.1	10.1	10.1				
28.0	9.2	9.2	9.2	9.2	8.0/29.9			
30.0	8.0	8.0	8.0	8.0	7.9/30.6			
32.0	7.4/30.4	7.3/31.4	7.8	7.8	7.8	7.8		
34.0			7.5	7.5	7.5	7.5		
36.0			7.1	7.1	7.1	7.1		
38.0			7.0/36.3	6.9/37.3	6.8	6.8	6.3/39.0	6.1/39.8
40.0					6.7	6.7	6.1	6.1
42.0					6.3/41.9	6.3	5.7	5.7
44.0						6.2/42.9	5.3	5.3
46.0							5.0	5.0
48.0							4.9/47.1	4.9
50.0								4.8/48.1

定格総荷重表

36.90mタワー

(単位: t)

作業半径 (m)	タワージブ長さ (m)															
	22.85								25.90							
	タワー角度 (°)															
	90				80				70				60			
2本掛	1本掛	2本掛	1本掛	2本掛	1本掛	2本掛	1本掛	2本掛	1本掛	2本掛	1本掛	2本掛	1本掛	2本掛	1本掛	
8.0	20.0/8.1	11.0/8.5								18.6/8.7						
9.0	20.0	11.0								18.6	11.0/9.2					
10.0	20.0	11.0								18.6	11.0					
12.0	20.0	11.0								18.6	11.0					
14.0	20.0	11.0								18.6	11.0					
15.0	18.6	11.0								18.6	11.0					
16.0	17.5	11.0								17.5	11.0					
18.0	15.5	11.0	15.4/18.1	11.0/18.7						15.5	11.0	14.5/19.3	11.0/19.9			
20.0	14.0	11.0	14.0	11.0						14.0	11.0	14.0	11.0			
22.0	12.5	11.0	12.5	11.0						12.5	11.0	12.5	11.0			
24.0	11.2	11.0	11.2	11.0						11.2	11.0	11.2	11.0			
26.0	9.6/24.6	9.5/25.6	10.5	10.5	9.7/27.7					10.2	10.2	10.2	10.2			
28.0			9.6	9.6	9.6	9.4/28.4				8.5/27.5	8.5	9.5	9.5	8.8/29.3		
30.0			8.9	8.9	8.9	8.9				8.4/28.5	8.5	8.5	8.5	8.5		
32.0			8.8/30.9	8.7/31.9	8.5	8.5					8.1	8.1	8.1	8.1		
34.0					8.3	8.3					7.9/33.9	7.9	7.8	7.8		
36.0					7.7	7.7	6.9/36.4	6.7/37.2				7.8/34.9	7.6	7.6		
38.0					7.4/37.1	7.4	6.5	6.5					7.1	7.1	6.2/38.5	6.0/39.3
40.0						7.3/38.1	6.1	6.1					6.6	6.6	5.9	5.9
42.0							5.7	5.7						6.5/41.0	5.6	5.6
44.0							5.6/42.8	5.5/43.8							5.2	5.2
46.0															5.0/45.7	5.0
48.0																4.9/46.7

作業半径 (m)	タワージブ長さ (m)																
	28.95								32.00								
	タワー角度 (°)																
	90				80				70				60				
2本掛	1本掛	2本掛	1本掛	2本掛	1本掛	2本掛	1本掛	2本掛	1本掛	2本掛	1本掛	2本掛	1本掛	2本掛	1本掛		
9.0	15.4/9.4	11.0/9.8															
10.0	15.4	11.0								14.6	11.0/10.4						
12.0	15.4	11.0								14.6	11.0						
14.0	15.4	11.0								14.6	11.0						
15.0	15.4	11.0								14.6	11.0						
16.0	15.4	11.0								14.6	11.0						
18.0	15.4	11.0								14.6	11.0						
20.0	14.0	11.0	13.6/20.4	11.0/21.0						14.0	11.0	12.7/21.6					
22.0	12.4	11.0	12.4	11.0						12.4	11.0	12.4	11.0/22.1				
24.0	11.2	11.0	11.2	11.0						11.1	11.0	11.1	11.0				
26.0	10.1	10.1	10.1	10.1						10.1	10.1	10.1	10.1				
28.0	9.2	9.2	9.2	9.2						9.2	9.2	9.2	9.2				
30.0	8.1	8.1	8.1	8.1	7.9/30.9	7.8/31.6				8.4	8.4	8.4	8.4				
32.0	7.5/30.4	7.4/31.4	7.8	7.8	7.8	7.8				7.8	7.8	7.8	7.8	8.2/32.5	7.7/33.2		
34.0			7.5	7.5	7.5	7.5				6.5/33.4	6.5	7.2	7.2	7.2	7.2		
36.0			7.0	7.0	7.0	7.0					6.4/34.4	7.0	7.0	7.0	7.0		
38.0			6.9/36.8	6.8/37.8	6.7	6.7						6.5	6.5	6.5	6.5		
40.0					6.5	6.5	5.7/40.5	5.5/41.3				6.2/39.8	6.2	6.1	6.1		
42.0					6.1	6.1	5.4	5.4					6.1/40.8	6.0	6.0	5.2/42.5	5.0/43.3
44.0					5.9/43.0	5.8	5.1	5.1						5.6	5.6	5.0	5.0
46.0							4.8	4.8						5.3/45.9	5.3	4.7	4.7
48.0							4.5	4.5							5.2/46.9	4.4	4.4
50.0							4.4/48.7	4.3/49.7								4.1	4.1
52.0																3.9/51.6	3.9
54.0																	3.9/52.6

定格総荷重表

39.95mタワー

(単位: t)

作業半径 (m)	タワージブ長さ (m)														
	22.85							25.90							
	タワー角度 (°)														
	90		80		70		60		90		80		70		60
2本掛	1本掛	2本掛	1本掛	2本掛	1本掛	2本掛	1本掛	2本掛	1本掛	2本掛	1本掛	2本掛	1本掛	2本掛	1本掛
8.0	17.5/8.1	11.0/8.5								16.0/8.7					
9.0	17.5	11.0								16.0	11.0/9.2				
10.0	17.5	11.0								16.0	11.0				
12.0	17.5	11.0								16.0	11.0				
14.0	17.5	11.0								16.0	11.0				
15.0	17.5	11.0								16.0	11.0				
16.0	17.5	11.0								16.0	11.0				
18.0	15.5	11.0	14.9/18.7	11.0/19.2						15.5	11.0	14.1/19.8			
20.0	14.0	11.0	14.0	11.0						14.0	11.0	14.0	11.0/20.4		
22.0	12.5	11.0	12.5	11.0						12.5	11.0	12.5	11.0		
24.0	11.3	11.0	11.3	11.0						11.3	11.0	11.3	11.0		
26.0	9.7/24.6	9.6/25.6	10.7	10.7						10.2	10.2	10.2	10.2		
28.0			9.7	9.7	9.4/28.7	9.1/29.4				8.5/27.5	8.5	9.6	9.6		
30.0			8.8	8.8	8.9	8.9				8.4/28.5	8.8	8.8	8.7/30.3	8.4/31.0	
32.0			8.5/31.5	8.5	8.4	8.4					8.1	8.1	8.1	8.1	
34.0				8.4/32.5	8.0	8.0					7.6	7.6	7.6	7.6	
36.0					7.5	7.5					7.5/34.4	7.4/35.4	7.1	7.1	
38.0					7.0	7.0	6.2	6.0/38.7					6.8	6.8	
40.0					6.9/38.1	6.8/39.1	5.8	5.8					6.4	6.4	5.6
42.0							5.4	5.4					6.2/41.1	6.2	5.3
44.0							5.1	5.1						6.1/42.1	4.9
46.0									5.0/44.3	5.0/45.3					4.7
48.0															4.5/47.2
50.0															4.4/48.2

作業半径 (m)	タワージブ長さ (m)														
	28.95							32.00							
	タワー角度 (°)														
	90		80		70		60		90		80		70		60
2本掛	1本掛	2本掛	1本掛	2本掛	1本掛	2本掛	1本掛	2本掛	1本掛	2本掛	1本掛	2本掛	1本掛	2本掛	1本掛
9.0	15.0/9.4	11.0/9.8													
10.0	15.0	11.0								14.0	11.0/10.4				
12.0	15.0	11.0								14.0	11.0				
14.0	15.0	11.0								14.0	11.0				
15.0	15.0	11.0								14.0	11.0				
16.0	15.0	11.0								14.0	11.0				
18.0	15.0	11.0								14.0	11.0				
20.0	14.0	11.0	13.2/21.0	11.0/21.5						14.0	11.0				
22.0	12.4	11.0	12.4	11.0						12.4	11.0	12.3/22.1	11.0/22.7		
24.0	11.2	11.0	11.2	11.0						11.1	11.0	11.1	11.0		
26.0	10.1	10.1	10.1	10.1						10.1	10.1	10.1	10.1		
28.0	9.2	9.2	9.2	9.2						9.2	9.2	9.4	9.4		
30.0	7.8	7.8	7.8	7.8						8.4	8.4	8.4	8.4		
32.0	7.5/30.4	7.4/31.4	7.6	7.6	7.6	7.5/32.6				7.8	7.8	7.8	7.8	7.4/33.6	
34.0			7.4	7.4	7.4	7.4				6.2/33.4	6.2	7.4	7.4	7.3/34.3	
36.0			6.9	6.9	6.9	6.9					6.1/34.4	6.9	6.9	6.9	6.9
38.0			6.7/37.4	6.7	6.6	6.6						6.4	6.4	6.4	6.4
40.0				6.6/38.4	6.3	6.3						6.0	6.0	6.0	6.0
42.0					5.9	5.9	5.1	4.9/42.8				5.9/40.3	5.8/41.3	5.8	5.8
44.0					5.5	5.5	4.8	4.8						5.4	5.4
46.0							5.4/45.0	4.5	4.5					5.1	5.1
48.0								4.2	4.2					5.0/46.9	4.9/47.9
50.0								4.0	4.0						3.9
52.0								4.0/50.2	3.9/51.2						3.7
54.0															3.6/53.1
56.0															3.5/54.1

作業半径 (m)	タワージブ長さ (m)							
	35.05							
	タワー角度 (°)							
	90		80		70		60	
2本掛	1本掛	2本掛	1本掛	2本掛	1本掛	2本掛	1本掛	
10.0	12.5/10.6	11.0/11.1						
12.0	12.5	11.0						
14.0	12.5	11.0						
15.0	12.5	11.0						
16.0	12.5	11.0						
18.0	12.5	11.0						
20.0	12.5	11.0						
22.0	12.3	11.0	11.5/23.2	11.0/23.8				
24.0	11.1	11.0	11.1	11.0				
26.0	10.0	10.0	10.0	10.0				
28.0	9.1	9.1	9.1	9.1				
30.0	8.4	8.4	8.4	8.4				
32.0	7.7	7.7	7.7	7.7				
34.0	7.1	7.1	7.1	7.1	6.5/35.2	6.1/35.9		
36.0	5.8	5.8	6.1	6.1	6.1	6.1		
38.0	5.5/36.3	5.4/37.3	5.7	5.7	5.7	5.7		
40.0			5.4	5.4	5.4	5.4		
42.0			5.2	5.2	5.2	5.2		
44.0			5.1/43.2	5.1	5.0	5.0		
46.0				5.0/44.2	4.8	4.8	4.2/46.1	
48.0					4.6	4.6	4.0	
50.0					4.4/49.9	4.4	3.7	
52.0						4.3/50.9	3.5	
54.0							3.3	
56.0							3.1	
58.0							3.1/56.1	

定格総荷重表

43.00mタワー

(単位：t)

作業半径 (m)	タワージブ長さ (m)															
	22.85							25.90								
	タワー角度 (°)															
	90		80		70		60		90		80		70		60	
2本掛	1本掛	2本掛	1本掛	2本掛	1本掛	2本掛	1本掛	2本掛	1本掛	2本掛	1本掛	2本掛	1本掛	2本掛	1本掛	
8.0	17.5/8.1	11.0/8.5								16.0/8.7						
9.0	17.5	11.0								16.0	11.0/9.2					
10.0	17.5	11.0								16.0	11.0					
12.0	17.5	11.0								16.0	11.0					
14.0	17.5	11.0								16.0	11.0					
15.0	17.5	11.0								16.0	11.0					
16.0	17.5	11.0								16.0	11.0					
18.0	15.5	11.0	14.6/19.2	11.0/19.8						15.5	11.0					
20.0	14.0	11.0	14.0	11.0						14.0	11.0	13.7/20.3	11.0/20.9			
22.0	12.5	11.0	12.5	11.0						12.5	11.0	12.5	11.0			
24.0	11.0	11.0	11.0	11.0						11.3	11.0	11.3	11.0			
26.0	9.4/24.6	9.3/25.6	10.5	10.5						10.2	10.2	10.2	10.2			
28.0			9.5	9.5	8.9/29.8					8.3/27.5	8.3	9.5	9.5			
30.0			8.8	8.8	8.8	8.6/30.5				8.2/28.5	8.7	8.7	8.2/31.4			
32.0			8.1	8.1	8.1	8.1					8.0	8.0	8.0	7.9/32.1		
34.0				8.0/33.0	7.8	7.8					7.4	7.4	7.4	7.4		
36.0					7.2	7.2					7.3/34.9	7.2/35.9	7.1	7.1		
38.0					6.7	6.7	5.5/39.5						6.6	6.6		
40.0					6.5/39.2	6.5	5.4	5.3/40.3					6.2	6.2	5.0/41.2	
42.0						6.4/40.2	5.1	5.1					5.8	5.8	4.9	4.8/42.3
44.0							4.8	4.8					5.8/42.1	5.7/43.1	4.6	4.6
46.0							4.5/45.8	4.5							4.3	4.3
48.0								4.5/46.8							4.1	4.1
50.0															4.0/48.8	3.9/49.8

作業半径 (m)	タワージブ長さ (m)																
	28.95							32.00									
	タワー角度 (°)																
	90		80		70		60		90		80		70		60		
2本掛	1本掛	2本掛	1本掛	2本掛	1本掛	2本掛	1本掛	2本掛	1本掛	2本掛	1本掛	2本掛	1本掛	2本掛	1本掛		
9.0	15.0/9.4	11.0/9.8															
10.0	15.0	11.0								14.0	11.0/10.4						
12.0	15.0	11.0								14.0	11.0						
14.0	15.0	11.0								14.0	11.0						
15.0	15.0	11.0								14.0	11.0						
16.0	15.0	11.0								14.0	11.0						
18.0	15.0	11.0								14.0	11.0						
20.0	14.0	11.0	12.8/21.5							14.0	11.0						
22.0	12.4	11.0	12.4	11.0/22.1						12.4	11.0	12.0/22.6	11.0/23.2				
24.0	11.2	11.0	11.2	11.0						11.2	11.0	11.3	11.0				
26.0	10.2	10.2	10.2	10.2						10.1	10.1	10.2	10.2				
28.0	9.3	9.3	9.3	9.3						9.2	9.2	9.3	9.3				
30.0	7.9	7.9	8.1	8.1						8.5	8.5	8.5	8.5				
32.0	7.3/30.4	7.2/31.4	7.9	7.9	7.8/33.0	7.5/33.7				7.8	7.8	7.9	7.9				
34.0			7.4	7.4	7.4	7.4				6.3/33.4	6.3	7.3	7.3	7.2/34.6	7.0/35.3		
36.0			6.8	6.8	6.8	6.8				6.2/34.4	6.8	6.8	6.8	6.8			
38.0			6.5/37.9	6.5	6.5	6.5					6.3	6.3	6.4	6.4			
40.0				6.4/38.9	6.0	6.0					5.9	5.9	5.9	5.9			
42.0					5.7	5.7	4.5/43.6				5.7/40.8	5.6/41.8	5.6	5.6			
44.0					5.3	5.3	4.5	4.4/44.3					5.2	5.2	4.1/45.6		
46.0					5.2/45.0	5.1	4.2	4.2					4.9	4.9	4.1	4.0/46.4	
48.0							3.9	3.9					4.6	4.6	3.8	3.8	
50.0							3.7	3.7							4.5/49.0	3.6	3.6
52.0							3.5/51.7	3.5								3.4	3.4
54.0								3.5/52.7								3.2	3.2
56.0																3.1/54.7	3.1/55.6

定格総荷重表

43.00mタワー

(単位:t)

作業半径 (m)	タワージブ長さ (m)																
	35.05							38.10									
	タワー角度 (°)																
	90		80		70		60		90		80		70		60		
2本掛	1本掛	2本掛	1本掛	2本掛	1本掛	2本掛	1本掛	2本掛	1本掛	2本掛	1本掛	2本掛	1本掛	2本掛	1本掛		
10.0	12.5/10.6	11.0/11.1								11.0/11.3	11.0/11.7						
12.0	12.5	11.0								11.0	11.0						
14.0	12.5	11.0								11.0	11.0						
15.0	12.5	11.0								11.0	11.0						
16.0	12.5	11.0								11.0	11.0						
18.0	12.5	11.0								11.0	11.0						
20.0	12.5	11.0								11.0	11.0						
22.0	12.4	11.0	11.3/23.8							11.0	11.0						
24.0	11.1	11.0	11.1	10.9/24.3						11.0	11.0	10.5/24.9	10.2/25.5				
26.0	10.0	10.0	10.0	10.0						10.0	10.0	10.0	10.0				
28.0	9.1	9.1	9.1	9.1						9.1	9.1	9.1	9.1				
30.0	8.4	8.4	8.4	8.4						8.3	8.3	8.3	8.3				
32.0	7.7	7.7	7.7	7.7						7.7	7.7	7.7	7.7				
34.0	7.2	7.2	7.2	7.2						7.1	7.1	7.1	7.1				
36.0	5.8	5.8	6.5	6.5	6.4/36.2	6.2/36.9				6.6	6.6	6.6	6.6	6.0/37.8			
38.0	5.5/36.3	5.4/37.3	6.1	6.1	6.1	6.1				5.9	5.9	5.9	5.9	5.9	5.8/38.5		
40.0			5.8	5.8	5.8	5.8				4.8/39.3	4.8	5.6	5.6	5.6	5.6		
42.0			5.4	5.4	5.4	5.4					4.7/40.3	5.4	5.4	5.3	5.3		
44.0			5.1/43.8	5.1	5.1	5.1						5.0	5.0	5.0	5.0		
46.0				5.0/44.8	4.8	4.8	3.7/47.6					4.7	4.7	4.7	4.7		
48.0					4.5	4.5	3.7	3.6/48.4				4.6/46.7	4.5/47.7	4.4	4.4	3.4/49.7	
50.0					4.2	4.2	3.4	3.4						4.1	4.1	3.3	3.2/50.5
52.0					4.1/50.9	4.0/51.9	3.2	3.2						3.9	3.9	3.1	3.1
54.0							3.0	3.0						3.7/53.9	3.7	2.9	2.9
56.0							2.9	2.9							3.6/54.9	2.7	2.7
58.0							2.7/57.6	2.7								2.5	2.5
60.0								2.6/58.6								2.4	2.4
62.0																2.3/60.5	2.3/61.5

定格総荷重表

46.05mタワー

(単位:t)

作業半径 (m)	タワージブ長さ (m)															
	22.85								25.90							
	タワー角度 (°)															
	90		80		70		60		90		80		70		60	
2本掛	1本掛	2本掛	1本掛	2本掛	1本掛	2本掛	1本掛	2本掛	1本掛	2本掛	1本掛	2本掛	1本掛	2本掛	1本掛	
8.0	17.5/8.1	11.0/8.5								16.0/8.7						
9.0	17.5	11.0								16.0	11.0/9.2					
10.0	17.5	11.0								16.0	11.0					
12.0	17.5	11.0								16.0	11.0					
14.0	17.5	11.0								16.0	11.0					
15.0	17.5	11.0								16.0	11.0					
16.0	17.5	11.0								16.0	11.0					
18.0	15.5	11.0	14.2/19.7							15.5	11.0					
20.0	14.0	11.0	14.0	11.0/20.3						14.0	11.0	13.3/20.9	11.0/21.4			
22.0	12.5	11.0	12.5	11.0						12.5	11.0	12.5	11.0			
24.0	11.0	11.0	11.0	11.0						11.3	11.0	11.3	11.0			
26.0	9.5/24.6	9.4/25.6	10.2	10.2						10.2	10.2	10.2	10.2			
28.0			9.5	9.5						8.3/27.5	8.3	9.4	9.4			
30.0			8.7	8.7	8.4/30.8	8.1/31.5				8.2/28.5	8.6	8.6				
32.0			8.0	8.0	8.0	8.0					7.9	7.9	7.8/32.4	7.5/33.1		
34.0			7.9/32.5	7.8/33.5	7.5	7.5					7.3	7.3	7.3	7.3		
36.0					7.0	7.0					6.9/35.5	6.9	6.9	6.9		
38.0					6.5	6.5						6.8/36.5	6.4	6.4		
40.0					6.1	6.1	5.0/41.0	4.8/41.8					6.0	6.0		
42.0					6.1/40.2	6.0/41.2	4.8	4.8					5.6	5.6	4.5/43.0	4.3/43.8
44.0							4.5	4.5					5.4/43.1	5.4	4.3	4.3
46.0							4.2	4.2						5.3/44.1	4.1	4.1
48.0							4.0/47.3	4.0							3.8	3.8
50.0								4.0/48.3							3.6	3.6
52.0															3.6/50.3	3.5/51.3

作業半径 (m)	タワージブ長さ (m)															
	28.95								32.00							
	タワー角度 (°)															
	90		80		70		60		90		80		70		60	
2本掛	1本掛	2本掛	1本掛	2本掛	1本掛	2本掛	1本掛	2本掛	1本掛	2本掛	1本掛	2本掛	1本掛	2本掛	1本掛	
9.0	15.0/9.4	11.0/9.8														
10.0	15.0	11.0								14.0	11.0/10.4					
12.0	15.0	11.0								14.0	11.0					
14.0	15.0	11.0								14.0	11.0					
15.0	15.0	11.0								14.0	11.0					
16.0	15.0	11.0								14.0	11.0					
18.0	15.0	11.0								14.0	11.0					
20.0	14.0	11.0								14.0	11.0					
22.0	12.4	11.0	12.4	11.0/22.6						12.4	11.0	11.6/23.2	11.0/23.7			
24.0	11.2	11.0	11.2	11.0						11.2	11.0	11.2	11.0			
26.0	10.2	10.2	10.2	10.2						10.1	10.1	10.1	10.1			
28.0	9.3	9.3	9.3	9.3						9.2	9.2	9.2	9.2			
30.0	7.9	7.9	8.2	8.2						8.5	8.5	8.4	8.4			
32.0	7.3/30.4	7.2/31.4	7.8	7.8						7.8	7.8	7.7	7.7			
34.0			7.2	7.2	7.2	7.0/34.7				6.3/33.4	6.3	7.2	7.2	6.7/35.7		
36.0			6.7	6.7	6.7	6.7				6.2/34.4	6.7	6.7	6.6	6.5/36.3		
38.0			6.3	6.3	6.2	6.2					6.2	6.2	6.1	6.1		
40.0			6.2/38.4	6.1/39.4	5.8	5.8					5.8	5.8	5.7	5.7		
42.0					5.5	5.5					5.5/41.4	5.5	5.4	5.4		
44.0					5.1	5.1	4.0/45.1	3.9/45.9				5.4/42.4	5.0	5.0		
46.0					4.8	4.8	3.9	3.9					4.7	4.7	3.6/47.1	3.5/47.9
48.0					4.8/46.1	4.7/47.1	3.7	3.7					4.4	4.4	3.5	3.5
50.0							3.4	3.4					4.3/49.0	4.2	3.3	3.3
52.0							3.2	3.2							3.1	3.1
54.0							3.1/53.2	3.1							2.9	2.9
56.0								3.1/54.2							2.8	2.8
58.0															2.7/56.2	2.6/57.2

定格総荷重表

46.05mタワー

(単位:t)

作業半径 (m)	タワージブ長さ (m)															
	35.05							38.10								
	タワー角度 (°)															
	90		80		70		60		90		80		70		60	
2本掛	1本掛	2本掛	1本掛	2本掛	1本掛	2本掛	1本掛	2本掛	1本掛	2本掛	1本掛	2本掛	1本掛	2本掛	1本掛	
10.0	12.5/10.6	11.0/11.1								11.0/11.3	11.0/11.7					
12.0	12.5	11.0								11.0	11.0					
14.0	12.5	11.0								11.0	11.0					
15.0	12.5	11.0								11.0	11.0					
16.0	12.5	11.0								11.0	11.0					
18.0	12.5	11.0								11.0	11.0					
20.0	12.5	11.0								11.0	11.0					
22.0	12.4	11.0								11.0	11.0					
24.0	11.1	11.0	10.9/24.3	10.5/24.9						11.0	11.0	10.2/25.4				
26.0	10.0	10.0	10.0	10.0						10.0	10.0	9.9	9.9			
28.0	9.1	9.1	9.1	9.1						9.1	9.1	9.0	9.0			
30.0	8.4	8.4	8.3	8.3						8.3	8.3	8.2	8.2			
32.0	7.7	7.7	7.6	7.6						7.7	7.7	7.6	7.6			
34.0	7.2	7.2	7.1	7.1						7.1	7.1	7.0	7.0			
36.0	5.9	5.9	6.6	6.6	6.2/37.3					6.6	6.6	6.5	6.5			
38.0	5.5/36.3	5.4/37.3	6.1	6.1	6.0	6.0				5.9	5.9	5.9	5.9	5.7/38.9	5.5/39.6	
40.0			5.7	5.7	5.6	5.6				4.8/39.3	4.8	5.6	5.6	5.5	5.5	
42.0			5.3	5.3	5.2	5.2					4.7/40.3	5.3	5.3	5.1	5.1	
44.0			5.0	5.0	4.9	4.9						4.9	4.9	4.8	4.8	
46.0			5.0/44.3	4.9/45.3	4.6	4.6						4.7	4.7	4.5	4.5	
48.0					4.3	4.3	3.2/49.2					4.5/47.2	4.5	4.2	4.2	
50.0					4.1	4.1	3.2	3.2				4.4/48.2	4.0	4.0	2.9/51.2	
52.0					3.8	3.8	2.9	2.9					3.7	3.7	2.8	2.8
54.0							3.7/53.0	2.7	2.7				3.5	3.5	2.6	2.6
56.0								2.5	2.5				3.4/54.9	3.3/55.9	2.4	2.4
58.0								2.4	2.4						2.2	2.2
60.0								2.3/59.1	2.3						2.1	2.1
62.0									2.2/60.1						1.9	1.9
64.0															1.9/62.1	1.8/63.1

作業半径 (m)	タワージブ長さ (m)					
	41.15					
	タワー角度 (°)					
	90		80		70	
2本掛	1本掛	2本掛	1本掛	2本掛	1本掛	
10.0	10.0/11.9					
12.0	10.0	10.0/12.3				
14.0	10.0	10.0				
15.0	10.0	10.0				
16.0	10.0	10.0				
18.0	10.0	10.0				
20.0	10.0	10.0				
22.0	10.0	10.0				
24.0	9.4	9.4				
26.0	8.6	8.6	8.4/26.6	8.2/27.2		
28.0	8.0	8.0	8.0	8.0		
30.0	7.4	7.4	7.4	7.4		
32.0	6.9	6.9	6.9	6.9		
34.0	6.4	6.4	6.4	6.4		
36.0	6.0	6.0	6.0	6.0		
38.0	5.6	5.6	5.6	5.6		
40.0	5.2	5.2	5.2	5.2	5.1/40.5	5.0/41.2
42.0	4.4	4.4	5.0	5.0	5.0	5.0
44.0	4.2/42.2	4.1/43.2	4.7	4.7	4.7	4.7
46.0			4.5	4.5	4.4	4.4
48.0			4.3	4.3	4.1	4.1
50.0			4.1	4.1	3.9	3.9
52.0			4.1/50.2	4.0/51.2	3.6	3.6
54.0					3.4	3.4
56.0					3.2	3.2
58.0					3.1/57.9	3.1
60.0						3.0/58.9

定格総荷重表

49.10mタワー

(単位:t)

作業半径 (m)	タワージブ長さ (m)														
	22.85						25.90								
	タワー角度 (°)						タワー角度 (°)								
	90		80		70		60		90		80		70		60
2本掛	1本掛	2本掛	1本掛	2本掛	1本掛	2本掛	1本掛	2本掛	1本掛	2本掛	1本掛	2本掛	1本掛	2本掛	1本掛
8.0	17.0/8.1	11.0/8.5						16.0/8.7							
9.0	17.0	11.0						16.0	11.0/9.2						
10.0	17.0	11.0						16.0	11.0						
12.0	17.0	11.0						16.0	11.0						
14.0	17.0	11.0						16.0	11.0						
15.0	17.0	11.0						16.0	11.0						
16.0	17.0	11.0						16.0	11.0						
18.0	15.5	11.0						15.5	11.0						
20.0	14.0	11.0	13.7/20.3	11.0/20.8				14.0	11.0	12.9/21.4					
22.0	12.5	11.0	12.5	11.0				12.5	11.0	12.5	11.0				
24.0	11.1	11.0	11.3	11.0				11.3	11.0	11.2	11.0				
26.0	9.5/24.6	9.4/25.6	10.3	10.3				10.2	10.2	10.1	10.1				
28.0			9.3	9.3				8.3/27.5	8.3	9.2	9.2				
30.0			8.6	8.6	7.9/31.9			8.2/28.5	8.5	8.5					
32.0			7.9	7.9	7.9	7.7/32.5			7.8	7.8	7.3/33.5				
34.0			7.6/33.1	7.6	7.3	7.3			7.2	7.2	7.1	7.0/34.2			
36.0				7.5/34.1	6.8	6.8			6.7	6.7	6.6	6.6			
38.0					6.3	6.3				6.6/37.0	6.2	6.2			
40.0					5.9	5.9					5.8	5.8			
42.0					5.7/41.2	5.7	4.4/42.5	4.2/43.3			5.4	5.4			
44.0						5.6/42.2	4.2	4.2			5.1	5.1	3.9/44.6	3.8/45.4	
46.0							3.9	3.9			5.0/44.2	4.9/45.2	3.8	3.8	
48.0							3.7	3.7					3.5	3.5	
50.0							3.6/48.9	3.5/49.9					3.3	3.3	
52.0													3.1/51.8	3.1	
54.0														3.1/52.8	

作業半径 (m)	タワージブ長さ (m)														
	28.95						32.00								
	タワー角度 (°)						タワー角度 (°)								
	90		80		70		60		90		80		70		60
2本掛	1本掛	2本掛	1本掛	2本掛	1本掛	2本掛	1本掛	2本掛	1本掛	2本掛	1本掛	2本掛	1本掛	2本掛	1本掛
9.0	15.0/9.4	11.0/9.8													
10.0	15.0	11.0						14.0	11.0/10.4						
12.0	15.0	11.0						14.0	11.0						
14.0	15.0	11.0						14.0	11.0						
15.0	15.0	11.0						14.0	11.0						
16.0	15.0	11.0						14.0	11.0						
18.0	15.0	11.0						14.0	11.0						
20.0	14.0	11.0						14.0	11.0						
22.0	12.4	11.0	12.0/22.5	11.0/23.1				12.4	11.0	11.2/23.7					
24.0	11.2	11.0	11.1	11.0				11.2	11.0	11.0	10.8/24.3				
26.0	10.2	10.2	10.0	10.0				10.1	10.1	9.9	9.9				
28.0	9.3	9.3	9.1	9.1				9.2	9.2	9.1	9.1				
30.0	8.0	8.0	8.4	8.4				8.5	8.5	8.3	8.3				
32.0	7.3/30.4	7.2/31.4	7.7	7.7				7.8	7.8	7.6	7.6				
34.0			7.1	7.1	6.7/35.1	6.5/35.8		6.3/33.4	6.3	7.1	7.1				
36.0			6.6	6.6	6.5	6.5			6.2/34.4	6.6	6.6	6.2/36.7	6.0/37.4		
38.0			6.2	6.2	6.0	6.0				6.1	6.1	5.9	5.9		
40.0			6.0/38.9	5.9/39.9	5.6	5.6				5.7	5.7	5.5	5.5		
42.0					5.2	5.2				5.4/41.9	5.4	5.1	5.1		
44.0					4.9	4.9					5.3/42.9	4.8	4.8		
46.0					4.6	4.6	3.5/46.6	3.4/47.4				4.5	4.5		
48.0					4.5/47.1	4.5	3.4	3.4				4.3	4.3	3.1/48.6	3.0/49.4
50.0						4.4/48.1	3.1	3.1				4.0	4.0	3.0	3.0
52.0							2.9	2.9				4.0/50.1	3.9/51.1	2.8	2.8
54.0							2.7	2.7						2.6	2.6
56.0							2.7/54.8	2.6/55.7						2.4	2.4
58.0														2.3/57.7	2.3
60.0															2.2/58.7

定格総荷重表

49.10mタワー

(単位: t)

作業半径 (m)	タワージブ長さ (m)													
	35.05						38.10							
	タワー角度 (°)						タワー角度 (°)							
	90		80		70		60		90		80		70	
2本掛	1本掛	2本掛	1本掛	2本掛	1本掛	2本掛	1本掛	2本掛	1本掛	2本掛	1本掛	2本掛	1本掛	
10.0	12.5/10.6	11.0/11.1							11.0/11.3	11.0/11.7				
12.0	12.5	11.0							11.0	11.0				
14.0	12.5	11.0							11.0	11.0				
15.0	12.5	11.0							11.0	11.0				
16.0	12.5	11.0							11.0	11.0				
18.0	12.5	11.0							11.0	11.0				
20.0	12.5	11.0							11.0	11.0				
22.0	12.4	11.0							11.0	11.0				
24.0	11.1	11.0	10.4/24.8	10.1/25.4					11.0	11.0				
26.0	10.0	10.0	9.8	9.8					10.0	10.0	9.7	9.5/26.5		
28.0	9.2	9.2	8.9	8.9					9.1	9.1	8.9	8.9		
30.0	8.4	8.4	8.2	8.2					8.3	8.3	8.1	8.1		
32.0	7.7	7.7	7.5	7.5					7.7	7.7	7.4	7.4		
34.0	7.2	7.2	7.0	7.0					7.1	7.1	6.9	6.9		
36.0	5.9	5.9	6.4	6.4					6.6	6.6	6.4	6.4		
38.0	5.5/36.3	5.4/37.3	6.0	6.0	5.7/38.3	5.5/39.0			5.9	5.9	5.9	5.9	5.3/39.9	
40.0			5.6	5.6	5.4	5.4			4.8/39.3	4.8	5.5	5.5	5.3	5.1/40.6
42.0			5.3	5.3	5.0	5.0				4.7/40.3	5.2	5.2	4.9	4.9
44.0			4.9	4.9	4.7	4.7					4.9	4.9	4.6	4.6
46.0			4.8/44.8	4.7/45.8	4.4	4.4					4.6	4.6	4.3	4.3
48.0					4.1	4.1					4.3/47.8	4.3	4.0	4.0
50.0					3.9	3.9	2.7/50.7	2.6/51.5				4.2/48.8	3.8	3.8
52.0					3.7	3.7	2.6	2.6					3.6	3.6
54.0					3.6/53.0	3.5	2.4	2.4					3.4	3.4
56.0							2.2	2.2					3.2	3.2
58.0							2.0	2.0						3.1/57.0
60.0							1.9	1.9						
62.0							1.8/60.6	1.8/61.6						

作業半径 (m)	タワージブ長さ (m)											
	41.15						44.20					
	タワー角度 (°)						タワー角度 (°)					
	90		80		70		90		80		70	
2本掛	1本掛	2本掛	1本掛	2本掛	1本掛	2本掛	1本掛	2本掛	1本掛	2本掛	1本掛	
10.0	9.5/11.9											
12.0	9.5	9.5/12.3					8.0/12.5	8.0/13.0				
14.0	9.5	9.5					8.0	8.0				
15.0	9.5	9.5					8.0	8.0				
16.0	9.5	9.5					8.0	8.0				
18.0	9.5	9.5					8.0	8.0				
20.0	9.5	9.5					8.0	8.0				
22.0	9.5	9.5					8.0	8.0				
24.0	9.3	9.3					7.9	7.9				
26.0	8.6	8.6	8.2/27.1	8.0/27.7			7.3	7.3				
28.0	8.0	8.0	8.0	8.0			6.7	6.7	6.6/28.3	6.4/28.8		
30.0	7.4	7.4	7.4	7.4			6.2	6.2	6.2	6.2		
32.0	6.9	6.9	6.9	6.9			5.7	5.7	5.8	5.8		
34.0	6.4	6.4	6.4	6.4			5.3	5.3	5.4	5.4		
36.0	6.0	6.0	6.0	6.0			4.9	4.9	5.1	5.1		
38.0	5.5	5.5	5.5	5.5			4.6	4.6	4.8	4.8		
40.0	5.1	5.1	5.1	5.1	4.9/41.5		4.2	4.2	4.5	4.5		
42.0	4.4	4.4	4.8	4.8	4.8	4.7/42.2	3.9	3.9	4.2	4.2	4.0/43.2	4.0/43.8
44.0	4.2/42.2	4.1/43.2	4.6	4.6	4.5	4.5	3.6	3.6	4.0	4.0	4.0	4.0
46.0			4.4	4.4	4.2	4.2	3.4/45.2	3.4	3.8	3.8	3.8	3.8
48.0			4.2	4.2	3.9	3.9		3.3/46.2	3.6	3.6	3.6	3.6
50.0			4.0	4.0	3.7	3.7			3.5	3.5	3.5	3.5
52.0			3.9/50.7	3.8/51.7	3.5	3.5			3.4	3.4	3.4	3.4
54.0					3.3	3.3			3.3/53.7	3.3	3.2	3.2
56.0					3.1	3.1				3.2/54.7	3.0	3.0
58.0					2.9	2.9					2.8	2.8
60.0					2.8/58.9	2.7/59.9					2.6	2.6
62.0											2.5/61.9	2.5
64.0												2.5/62.8

定格総荷重表

52.15mタワー

(単位:t)

作業半径 (m)	タワージブ長さ (m)																
	22.85							25.90									
	タワー角度 (°)																
	90		80		70		60		90		80		70		60		
2本掛	1本掛	2本掛	1本掛	2本掛	1本掛	2本掛	1本掛	2本掛	1本掛	2本掛	1本掛	2本掛	1本掛	2本掛	1本掛		
8.0	17.0/8.1	11.0/8.5								16.0/8.7							
9.0	17.0	11.0								16.0	11.0/9.2						
10.0	17.0	11.0								16.0	11.0						
12.0	17.0	11.0								16.0	11.0						
14.0	17.0	11.0								16.0	11.0						
15.0	17.0	11.0								16.0	11.0						
16.0	17.0	11.0								16.0	11.0						
18.0	15.5	11.0								15.5	11.0						
20.0	14.0	11.0	13.3/20.8	11.0/21.4						14.0	11.0	12.3/21.9					
22.0	12.5	11.0	12.4	11.0						12.5	11.0	12.3	11.0/22.5				
24.0	11.1	11.0	11.2	11.0						11.3	11.0	11.0	11.0				
26.0	9.6/24.6	9.5/25.6	10.1	10.1						10.2	10.2	10.0	10.0				
28.0			9.2	9.2						8.4/27.5	8.4	9.1	9.1				
30.0			8.4	8.4							8.3/28.5	8.3	8.3				
32.0			7.8	7.8	7.3/32.9	7.1/33.6						7.7	7.7				
34.0			7.3/33.6	7.3	7.0	7.0						7.1	7.1	6.7/34.5	6.6/35.2		
36.0				7.2/34.6	6.5	6.5						6.6	6.6	6.3	6.3		
38.0					6.0	6.0						6.5/36.5	6.4/37.5	5.9	5.9		
40.0					5.6	5.6								5.5	5.5		
42.0					5.3	5.3								5.1	5.1		
44.0					5.2/42.3	5.1/43.3	3.8	3.7/44.8						4.8	4.8		
46.0							3.6	3.6						4.7/45.2	4.7	3.4/46.1	3.2/46.9
48.0							3.4	3.4							4.6/46.2	3.1	3.1
50.0							3.1	3.1								2.9	2.9
52.0							3.1/50.4	3.0/51.4								2.7	2.7
54.0																2.6/53.3	2.6
56.0																	2.5/54.3

作業半径 (m)	タワージブ長さ (m)																
	28.95							32.00									
	タワー角度 (°)																
	90		80		70		60		90		80		70		60		
2本掛	1本掛	2本掛	1本掛	2本掛	1本掛	2本掛	1本掛	2本掛	1本掛	2本掛	1本掛	2本掛	1本掛	2本掛	1本掛		
9.0	15.0/9.4	11.0/9.8															
10.0	15.0	11.0								14.0	11.0/10.4						
12.0	15.0	11.0								14.0	11.0						
14.0	15.0	11.0								14.0	11.0						
15.0	15.0	11.0								14.0	11.0						
16.0	15.0	11.0								14.0	11.0						
18.0	15.0	11.0								14.0	11.0						
20.0	14.0	11.0								13.9	11.0						
22.0	12.4	11.0	11.5/23.1	11.0/23.6						12.4	11.0						
24.0	11.2	11.0	10.9	10.9						11.2	11.0	10.7/24.2	10.4/24.8				
26.0	10.2	10.2	9.9	9.9						10.1	10.1	9.8	9.8				
28.0	9.3	9.3	9.0	9.0						9.2	9.2	8.9	8.9				
30.0	8.0	8.0	8.2	8.2						8.5	8.5	8.2	8.2				
32.0	7.3/30.4	7.2/31.4	7.6	7.6						7.8	7.8	7.5	7.5				
34.0			7.0	7.0						6.3/33.4	6.3	6.9	6.9				
36.0			6.5	6.5	6.2/36.1	6.0/36.8					6.2/34.4	6.4	6.4	5.7/37.7			
38.0			6.1	6.1	5.7	5.7						6.0	6.0	5.6	5.5/38.4		
40.0			5.8/39.5	5.8	5.4	5.4						5.6	5.6	5.2	5.2		
42.0				5.7/40.5	5.0	5.0						5.3	5.3	4.9	4.9		
44.0					4.7	4.7						5.2/42.4	5.1/43.4	4.6	4.6		
46.0					4.4	4.4								4.3	4.3		
48.0					4.1	4.1	2.9/48.1	2.8/48.9						4.0	4.0		
50.0					4.1/48.2	4.0/49.2	2.7	2.7						3.8	3.8	2.5/50.2	2.4/51.0
52.0							2.5	2.5						3.7/51.1	3.7	2.3	2.3
54.0							2.3	2.3							3.6/52.1	2.2	2.2
56.0							2.2	2.2								2.0	2.0
58.0							2.1/56.3	2.0/57.3								1.9	1.9
60.0																1.8/59.2	1.8
62.0																	1.7/60.2

定格総荷重表

52.15mタワー

(単位:t)

作業半径 (m)	タワージブ長さ (m)											
	35.05					38.10						
	タワー角度 (°)					タワー角度 (°)						
	90		80		70		90		80		70	
2本掛	1本掛	2本掛	1本掛	2本掛	1本掛	2本掛	1本掛	2本掛	1本掛	2本掛	1本掛	
10.0	12.5/10.6	11.0/11.1					11.0/11.3	11.0/11.7				
12.0	12.5	11.0					11.0	11.0				
14.0	12.5	11.0					11.0	11.0				
15.0	12.5	11.0					11.0	11.0				
16.0	12.5	11.0					11.0	11.0				
18.0	12.5	11.0					11.0	11.0				
20.0	12.5	11.0					11.0	11.0				
22.0	12.4	11.0					11.0	11.0				
24.0	11.1	11.0	10.0/25.4	9.7/25.9			11.0	11.0				
26.0	10.1	10.1	9.7	9.7			10.0	10.0	9.4/26.5	9.1/27.1		
28.0	9.2	9.2	8.8	8.8			9.1	9.1	8.7	8.7		
30.0	8.4	8.4	8.0	8.0			8.4	8.4	8.0	8.0		
32.0	7.7	7.7	7.4	7.4			7.7	7.7	7.3	7.3		
34.0	7.2	7.2	6.8	6.8			7.1	7.1	6.7	6.7		
36.0	5.9	5.9	6.3	6.3			6.6	6.6	6.3	6.3		
38.0	5.6/36.3	5.5/37.3	5.9	5.9	5.2/39.4		6.0	6.0	5.8	5.8		
40.0			5.5	5.5	5.1	5.1	4.8/39.3	4.8	5.4	5.4	4.8/41.0	4.6/41.7
42.0			5.2	5.2	4.8	4.8		4.7/40.3	5.1	5.1	4.6	4.6
44.0			4.8	4.8	4.4	4.4			4.8	4.8	4.3	4.3
46.0			4.6/45.4	4.6	4.2	4.2			4.5	4.5	4.1	4.1
48.0				4.5/46.4	3.9	3.9			4.2	4.2	3.8	3.8
50.0					3.7	3.7			4.2/48.3	4.1/49.3	3.6	3.6
52.0					3.5	3.5					3.4	3.4
54.0					3.3	3.3					3.2	3.2
56.0					3.3/54.1	3.2/55.1					3.0	3.0
58.0											2.9/57.0	2.8

作業半径 (m)	タワージブ長さ (m)											
	41.15					44.20						
	タワー角度 (°)					タワー角度 (°)						
	90		80		70		90		80		70	
2本掛	1本掛	2本掛	1本掛	2本掛	1本掛	2本掛	1本掛	2本掛	1本掛	2本掛	1本掛	
10.0	9.5/11.9											
12.0	9.5	9.5/12.3					8.0/12.5	8.0/13.0				
14.0	9.5	9.5					8.0	8.0				
15.0	9.5	9.5					8.0	8.0				
16.0	9.5	9.5					8.0	8.0				
18.0	9.5	9.5					8.0	8.0				
20.0	9.5	9.5					8.0	8.0				
22.0	9.5	9.5					8.0	8.0				
24.0	9.3	9.3					7.9	7.9				
26.0	8.6	8.6	8.1/27.6				7.2	7.2				
28.0	8.0	8.0	8.0	7.9/28.2			6.7	6.7	6.5/28.8	6.3/29.4		
30.0	7.4	7.4	7.4	7.4			6.2	6.2	6.2	6.2		
32.0	6.9	6.9	6.9	6.9			5.7	5.7	5.8	5.8		
34.0	6.4	6.4	6.4	6.4			5.3	5.3	5.4	5.4		
36.0	5.9	5.9	5.9	5.9			4.9	4.9	5.1	5.1		
38.0	5.5	5.5	5.5	5.5			4.6	4.6	4.8	4.8		
40.0	5.1	5.1	5.1	5.1			4.2	4.2	4.5	4.5		
42.0	4.4	4.4	4.6	4.6	4.4/42.6	4.3/43.3	3.9	3.9	4.2	4.2		
44.0	4.2/42.2	4.1/43.2	4.4	4.4	4.2	4.2	3.6	3.6	4.0	4.0	4.0/44.2	3.9/44.9
46.0			4.3	4.3	3.9	3.9	3.4/45.2	3.4	3.8	3.8	3.8	3.8
48.0			4.1	4.1	3.7	3.7		3.3/46.2	3.6	3.6	3.6	3.6
50.0			3.9	3.9	3.5	3.5			3.5	3.5	3.3	3.3
52.0			3.8/51.3	3.8	3.3	3.3			3.4	3.4	3.1	3.1
54.0				3.7/52.2	3.1	3.1			3.3	3.3	2.9	2.9
56.0					2.9	2.9			3.3/54.2	3.2/55.2	2.7	2.7
58.0					2.7	2.7					2.6	2.6
60.0					2.6	2.5/60.9					2.4	2.4
62.0											2.2	2.2
64.0											2.1/62.9	2.1/63.9